

Save time and control costs with Managed Print Services.

GFC
imageCARE®



Introducing an innovative business technology strategy designed to help you save time and control costs.

You can save up to 30% on printing, copying and document management with imageCARE® managed print services.

At the Gordon Flesch Company, we take a refreshing approach to office technology. We're here to do more than simply sell you products. We're here to provide you with solutions. Solutions that help you meet your business objectives. Whether you're looking to save time or save resources, our print management consultants will *analyze* your current printing, copying and document management configuration, *make recommendations* for improvement and then help you *implement a plan* that has a positive impact on your business' bottom line.



We call it imageCARE.® Because it's not just about equipment, technology and service, it's about providing the right equipment, technology and service for you.

The solutions we provide are different for every customer. After all, your business is not like the one down the street. Why should you have the same managed print services? Here's how we'll develop the strategy that's right for you:

Expert analysis from print management consultants.

It's quite possible that you and your team might not even be aware of the implications that your current print strategy is having on your organization. That's where our experts come in. We'll use *output analytics* to help us get a global view of your fleet. It will allow us to identify over and underutilized equipment, usage trends and more. Each report leads us to solutions that will save you time and control costs.



Customized solutions that fulfill your unique needs.

From the best in office equipment, service and supplies to controlling how your staff interacts with that equipment, we'll create the ideal solution set for you. And, if you have special corporate objectives that you're looking to achieve, such as eliminating waste or increasing the sustainability of your office, we'll make recommendations for that, too. Document management, fleet management, supply fulfillment and more—no matter what you need, we're positioned to make it happen. Just a few of the options you might see include:

Virtual Device Management—facilitates real-time remote monitoring of your fleet for quick and efficient identification of problems, needs and potential areas of improvement.

Document Management—helps you minimize the need for excessive printing with electronic archiving, file sharing and more.

Green Initiatives & Sustainability—saves energy, materials and other resources with strategies that minimize printing, encourage electronic document management and facilitate recycling.

Active Print Strategy—controls who prints, how they print and the printers they use with rules-based technology.

Full Product Offering—provides everything from single function printers to production printers from the industry's leading brands.

Print Economics—manages your printing costs to keep them under budget.

Fleet Management—keeps track of every machine (and its operational status) within your organization.

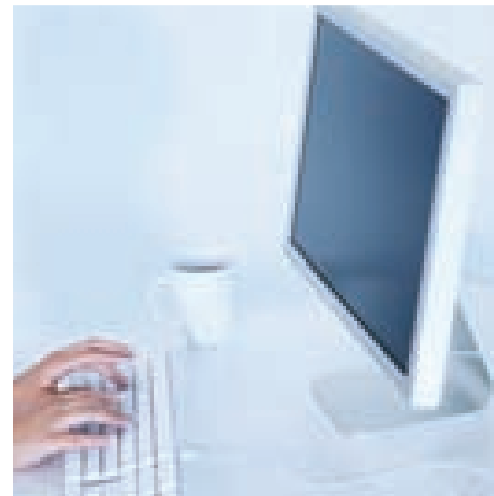
Guaranteed performance for guaranteed success.

We'll also create a customized support program to ensure our solutions are performing the way they were intended. Whether you want someone to take the pain and hassle of managed print services completely off your plate, or if you are looking for ways to keep it under the control of your staff, we'll help you achieve maximum uptime, all the time with unique solutions, such as:

Supply Management—eliminates excess and obsolete stock with just-in-time delivery of toner.

National Support—provides the support you need, when you need it no matter where you are located.

Visit www.gflesch.com to learn more.



*Did you know
that the average business
will spend up to 3% of
its revenue on printing?
We're here to bring
that average down.**

* Source: The Gartner Group

Illinois

401 N. Kirk Road
Geneva, IL 60134
Phone: 630.262.8300 or 800.950.4718

Indiana

6848 Hillisdale Court
Indianapolis, IN 46250
Phone: 317.489.0470 or 888.269.7217

Ohio

5655 Venture Drive
Dublin, OH 43017
Phone: 614.789.5700 or 800.756.1174

Wisconsin

2675 Research Park Drive
Madison, WI 53711
Phone: 608.271.2100 or 800.333.5905

11021 West Lincoln Avenue
West Allis, WI 53227
Phone: 414.321.8844 or 800.365.1672

Satellite Offices

Chicago, IL
Downers Grove, IL
Joliet, IL
Rockford, IL
Vernon Hills, IL
Chillicothe, OH
Columbus, OH
Findlay, OH
Mansfield, OH
Newark, OH
Janesville, WI

Corporate Headquarters

2675 Research Park Drive
Madison, WI 53711
Phone: 800.333.5905

www.gflesch.com

