



imageWARE Prepress Manager

Canon imageWARE Prepress Manager is a comprehensive document make-ready and production workflow tool for corporate print shops and print service providers, designed to simplify the document publishing process.



Make-Ready Made Easy. Are you looking for an easy-to-use make-ready solution? Get started now with imageWARE Prepress Manager. To create documents simply drag and drop files into imageWARE Prepress Manager or scan in hardcopy content. The software's rich graphical user interface lets you preview your job during every step of the process, minimizing the need for rework and eliminating wasted time and materials.



Advanced Functionality. Once scanned, paper based documents are easily manipulated utilizing tools including deskewing, despeckling and automatic removal of hole punch marks. Save time with pre-defined templates for automatic document formatting or create your own custom templates enabling future automation. With imageWARE Prepress Manager you can effortlessly move pages within a document, create unique settings for individual chapters, and specify detailed imposition options when creating Perfect Bound books, booklets and off-line cutting jobs.



Integrate With Canon Devices. From within imageWARE Prepress Manager, design output in accordance with your imagePRESS, imageRUNNER, and Color imageRUNNER devices, leveraging the supported finishing capabilities. For example, to create a perfect bound book, in the imageWARE Prepress Manager finishing tab simply set your booklet style function to Perfect Binding or select the Perfect Binding template from the list of available templates. You can then print and finish your book on your Canon device.



Automate Your Workflow. imageWARE Prepress Manager supports the JDF standard, permitting users to create documents inclusive of JDF Job Tickets. To more effectively manage JDF print jobs, Canon provides imageWARE Print Job Manager and JDF Parser. imageWARE Print Job Manager allows users to actively manage jobs being sent to JDF compatible printers including Canon imageRUNNER and imagePRESS engines having installed Canon's JDF Parser.



Workflow Integration

To help you be successful in growing your digital print business, imagePRESS Workflow Solutions focus on six critical areas, one of which is **Workflow Integration**.

Shortening job turnaround time is crucial to the success of your production environment. Our workflow integration solutions are designed to automate processes to increase efficiency, productivity, profitability, and streamline jobs through your shop quickly. We are also committed to having our solutions leverage the investment that you have made with your workflow, which will help shorten learning curves and serve your customers better.

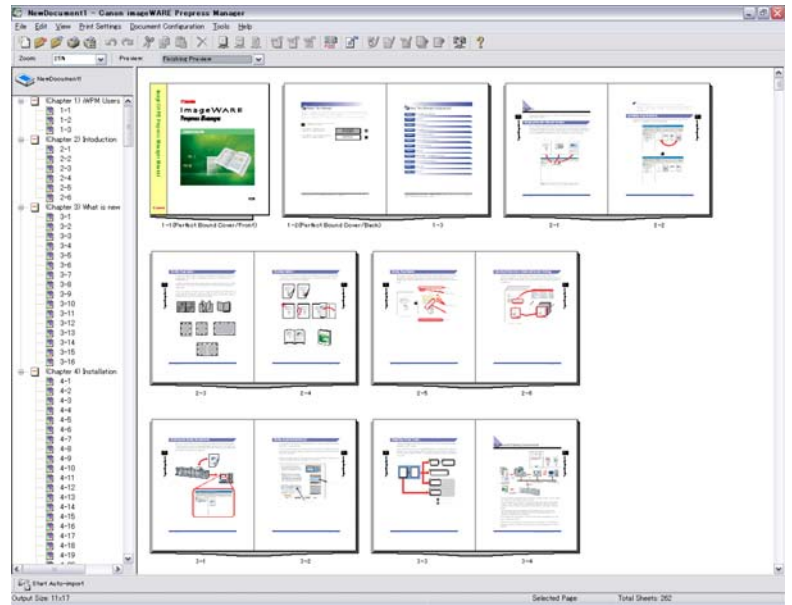


Ease of Use. Designed for ease of use, extensive training or prior experience is not necessary to produce professional quality print jobs like brochures, postcards and users' manuals.

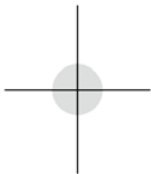
Reduce Make-Ready Time. Utilize the various preview functions to reduce operating time with quick and accurate document editing.

Drive Productivity. Merge files from different sources, edit native documents, annotate text and images, print on tabs, select the paper tray for whole documents, insert sheets and staple documents by chapter for more efficient document creation.

Automate with Canon Devices. Further automate using JDF with imageWARE Prepress Manager and your supported Canon device, leveraging the finishing capabilities.



Use the preview functionality of imageWARE Prepress Manager to view your job during each step of the process.



Canon
*image*ANYWARE

1-800-OK-CANON
www.usa.canon.com

Canon U.S.A., Inc.
One Canon Plaza
Lake Success, NY 11042

CANON, IMAGEPRESS, and IMAGERUNNER are registered trademarks of Canon Inc. in the United States and may also be registered trademarks or trademarks in other countries. IMAGEWARE is a registered trademark of Canon U.S.A., Inc. in the United States and is a trademark of Canon Inc. in certain other countries. IMAGEANYWARE is a trademark of Canon. All other referenced product names and marks are trademarks of their respective owners and are hereby acknowledged. Specifications and availability are subject to change without notice.

©2009 Canon U.S.A., Inc. All rights reserved.