

# Canon



**CORPORATE SOLUTIONS**



**imageRUNNER®**  
3530/2830/2230

## CORPORATE SOLUTIONS

### ACHIEVE MORE WITHOUT EXHAUSTING YOUR BUDGET.

A powerful lineup of Canon multifunction office systems  
that can take your business to a higher level.



**imageRUNNER®**  
3 5 3 0 / 2 8 3 0 / 2 2 3 0

Your growing business is unique. You need greater productivity as well as the flexibility to shape office solutions around your specific needs. That's why you need the Canon imageRUNNER 3530/2830/2230 digital multifunction office systems.

Take command of your office productivity, starting with a standard copier configuration, and build a system to meet your printing, scanning, faxing, and document storage needs as your business dictates. Canon's ImagePlatform architecture ensures concurrent processing of each task for maximum productivity every time, for every job.

And when the imageRUNNER 3530/2830/2230 devices are fully connected to your network, all users can leverage system capabilities directly from their desktops through intuitively designed drivers—complete with finishing and paper supply functions. All this in an extremely compact, cost-effective system your business can count on.

## A FIRST IMPRESSION ALWAYS LASTS.

Make your business stand out from all the others.

### PRODUCE HIGH-QUALITY DIGITAL COPIES WITH CONFIDENCE

The imageRUNNER 3530/2830/2230 models are designed to make your documents look their best. These systems can capture images at true 600 x 600 dpi resolution and produce high-quality output for both text and images—equivalent to 1200 x 600 dpi for copying and 2400 x 600 dpi for printing, with 256 gradations. Each model hosts a number of productivity-enhancing copy features that save time and money. Standard Automatic Duplexing provides two-sided printing to conserve time and paper. Also, with Canon's RAPID Fusing System™, warm-up times and energy consumption costs are kept to a minimum.

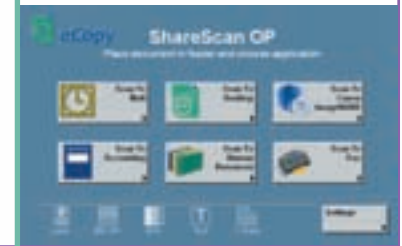
### A MULTIFUNCTIONAL DELIGHT

The imageRUNNER system, when equipped with an optional printer kit, is transformed into a productive multifunction device that can greatly improve your workflow. As networked printers, the imageRUNNER 3530/2830/2230 devices support Canon's Ultra Fast Rendering II (UFR II) technology for fast document processing, and available support for popular PCL 5e/6 page description languages. And with the Canon Network ScanGear utility\* you can easily integrate scanned images with your documents using TWAIN-compatible software.

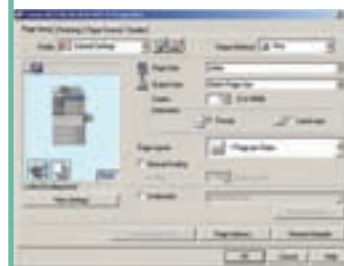
Innovative Mail Box features\* provide the ability to store scanned documents and printed files directly into device memory for later use. Each Mail Box can be customized and password-protected for complete confidentiality.

### POWERFUL DOCUMENT DISTRIBUTION

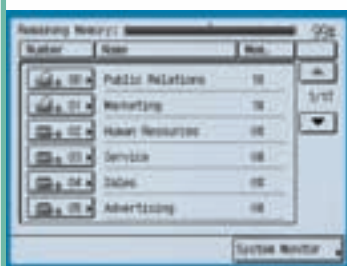
The imageRUNNER 3530/2830/2230 systems can handle all your heavy-duty faxing needs when equipped with the optional Super G3 Fax Board\*. Time-saving features include a high-capacity address book and auto-dialing to speed operation, as well as PC Fax capabilities that allow you to transmit fax documents easily from a networked computer. For even greater document distribution needs, you may configure the system with the powerful eCopy suite\* of products that link the device to your company's e-mail and networked enterprise applications for secure, paperless distribution and management of data.



eCopy ShareScan™



UFR II Print Driver



Mail Box Main Menu

\* Requires UFR II Printer Kit-E3 or UFR II/PCL Printer Kit-E2.

## A SINGLE DEVICE THAT CAN DO THE WORK OF MANY

In addition to enhancing productivity, the imageRUNNER 3530/2830/2230 devices save space and reduce costs.

### COMPACT, DURABLE DESIGN

The incredibly compact imageRUNNER 3530/2830/2230 models are built to accommodate busy office environments with limited space. High-yielding supplies and consumables keep running costs and downtime to a minimum for top-notch efficiency. And thanks to an easy-to-load bottle design, toner replenishment is quick and clean.

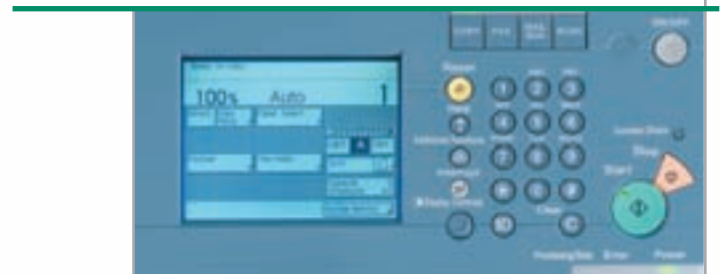
An optional 50-sheet Duplexing Automatic Document Feeder easily handles multiple-page originals so you can focus on other tasks. The system handles various paper formats, from Statement-R to Ledger, with a maximum paper capacity of 2,250 sheets to keep your business moving. The imageRUNNER 3530/2830/2230 devices also support a range of output options to increase productivity, including an innovative built-in finishing option that offers full sorting, stapling, and optional hole-punching, without taking up any extra space.

### EASE-OF-USE

The imageRUNNER 3530/2830/2230 models are designed for easy operation at the device through an intuitive touch-screen panel or at a desktop using a Remote UI\*(User Interface) that allows users to control operations via their Web browser. Canon also provides a complete set of device management and monitoring utilities. As an ENERGY STAR® qualified system, the imageRUNNER 3530/2830/2230 systems are designed with the environment in mind.

### IMAGE OF A LEADER

Canon continues to set new standards for quality, performance, and reliability. That's why you can trust Canon to provide you with solutions to make your business more productive and competitive.



Control Panel



Remote UI

\* Requires UFR II Printer Kit-E3 or UFR II/PCL Printer Kit-E2.

## imageRUNNER 3530/2830/2230

### imageRUNNER 3530

At 35 pages per minute, the imageRUNNER 3530 device is an ideal solution for busier, medium-size offices and departments within larger corporations.



### imageRUNNER 2830/2230

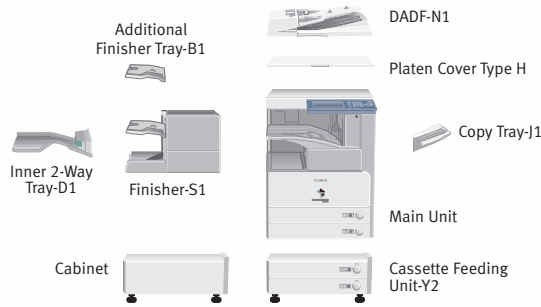
With the ability to deliver output at 28 and 22 pages per minute, respectively, the compact imageRUNNER 2830/2230 models are perfect for small businesses and workgroups.

Feature	Standard Configuration	Available with Optional Hard Disk
Memory Capacity	256MB RAM	256MB RAM 20GB Hard Disk
Copy	Standard	Standard
Mail Box	Optional*	Standard
Network Print	Optional*	Standard (UFR II or UFR II/PCL 5e/6)
Network Scan	Optional*	Standard
Fax	Optional*†	Optional†
eCopy Suite	Optional*	Optional

\* Requires additional 20GB Hard Disk (ships with the UFR II Printer Kit-E3 and UFR II/PCL Printer Kit-E2).

† Requires the Super G3 Fax Board-Q1 with optional 20GB Hard Disk to be installed.

# SPECIFICATIONS



## MAIN UNIT

Type:	Monochrome Digital, Multifunction Imaging System
Imaging System:	Laser Dry Electrostatic Transfer
Developing System:	Dry Mono Component Developing System
Fixing System:	RAPID Fusing System
Memory	
Standard:	256MB RAM
Optional:	20GB HDD
First-Copy Time	
imageRUNNER 3530:	3.9 Seconds from Platen Glass 5.9 Seconds from Feeder
imageRUNNER 2830/2230:	4.9 Seconds from Platen Glass 6.9 Seconds from Feeder
Warm-Up Time:	10 Seconds or Less from Sleep Mode 15 Seconds or Less from Main Power Off 30 Seconds or Less from Main Power Off When Configured with Either Printer Kit
Copy/Print Speed:	35/28/22 ppm (Letter)
Max. Copy Reservation:	5 Jobs
Actual Resolution:	600 dpi x 600 dpi
Interpolated Resolution:	1200 dpi x 600 dpi (Copy) 2400 dpi x 600 dpi (Print)
Halftone:	256 Gradations of Gray
Duplexing:	Standard Automatic Trayless Duplexing
Magnification Reduction/ Enlargement:	25% to 400% (Platen) 25% to 200% (Feeder) (In 1% Increments)
Exposure Control:	Automatic or Manual (9 Levels)
Paper Sources	
Standard:	Dual 550-Sheet Paper Cassettes (1,100 Sheets) Stack Bypass (50 Sheets)
Optional:	Dual 550-Sheet Cassette Feeding Unit (2,250 Sheets Max.)
Multiple Copies:	1 to 999
Paper Weights:	17 lb. to 20 lb. Bond (Cassette) 17 lb. to 32 lb. Bond (Stack Bypass)
Network Interface Connections:	10/100 Base-TX(RJ-45)
Dimensions (H x W x D):	29-7/8" x 22-1/4" x 27-5/8" (761mm x 565mm x 700mm)
Installation Space (W x D):	34" x 27-5/8"
Weight:	152 lb. (69kg)
Power Requirements:	120V AC, 60Hz, 10A (3570) 120V AC, 60Hz, 8A (2870/2270)
Power Consumption:	1.35kW (Max.)
Drum:	Organic Photo Conductor (OPC)
Estimated Yield:	85,000 Impressions (3530) 75,000 Impressions (2830/2230)

Toner Yield: 24,000 @ 6% Coverage (3530)  
21,000 @ 6% Coverage (2830/2230)

## OPTIONAL ACCESSORIES

<b>Duplexing Automatic Document Feeder-N1</b>	
Acceptable Originals:	Statement to 11" x 17"
Capacity:	50 Sheets (20 lb. Bond/Letter)
Max. Paper Weight:	13 lb. to 32 lb. Bond
<b>Cassette Feeding Unit-Y2</b>	
Paper Capacity:	Dual 550-Sheet Paper Cassettes (1,100 Sheets/20 lb. Bond)
Acceptable Paper Sizes:	Statement-R to 11" x 17"
Acceptable Paper Weights:	17 lb. to 20 lb. Bond
<b>Inner 2-Way Tray-D1*</b>	
Number of Trays:	2 Trays
Tray Capacity	
Lower Output Tray:	250 Sheets (Letter) 100 Sheets (Other Sizes)
Upper Output Tray:	100 Sheets (Letter) 50 Sheets (Other Sizes)
Acceptable Paper Sizes:	Statement to 11" x 17"
Attachable Accessories:	Copy Tray-J1
<b>Finisher-S1*</b>	
Number of Trays:	1 Tray (Second Tray Optional)
Tray Capacity	
Non-Collate, Collate, Group Mode:	1,000 Sheets (Letter, Statement)
Staple Mode:	1,000 Sheets/30 Sets
Tray Capacity (With Additional Finisher Tray-B1)	
Non-Collate, Collate, Group Mode:	300 Sheets per Tray (Letter, Statement)
Staple Mode:	300 Sheets/30 Sets per Tray (Letter) 150 Sheets/30 Sets (Legal, 11" x 17")
Staple Position/Size	
Top Left Corner:	11" x 17" (Landscape), Legal (Landscape), Letter, Letter-R
Top Right Corner:	11" x 17" (Portrait), Legal (Portrait)
Max. Stapling Capacity (Up to 20 lb. Bond):	50 Sheets (Letter)
Attachable Accessories:	Additional Finisher Tray-B1 Puncher Unit-R1 Copy Tray-J1

## Copy Tray-J1 (option for Inner 2-Way Tray and Finisher-S1)

Tray Capacity: 150 Sheets (Letter)  
75 Sheets (All Other Sizes)

## Super G3 Fax Board-Q1

Applicable Line: Public Switched Telephone Network (PSTN)  
Connection Lines: One  
Sending/Original Sizes: Statement to 11" x 17"  
(from Document Feeder)  
Recording/Printing Sizes: Statement to 11" x 17"

## UFR II Printer Kit-E3, UFR II/PCL Printer Kit-E2

Processor: Canon Custom Processor—Shared  
RAM: 256MB—Shared  
Hard Disk: 20GB—Shared

## PDL Support

UFR II Printer Kit-E3: UFR II  
UFR II/PCL Printer Kit-E2: UFR II/PCL

## Interface Connections

Standard: 10/100 Base-TX (RJ-45), USB 2.0  
High-Speed

## Network OS:

Windows® 98/Me®  
Windows 2000/XP  
Windows NT® 4.0/Server 2003  
Macintosh™ OS 10.1.5 or Later (PPD)  
Solaris™ 1.1x, 2.5x, or Later  
Novell® NetWare® v3.2, 4.1, 4.11,  
4.2, 5, 5.1, 6, 6.5 (IPX/SPX™)

## Additional Optional Accessories and Utilities

Accessibility Handle-A1  
Braille Label Kit-A1  
Cabinet  
Card Reader-C1  
Card Sets  
Document Tray-J1  
eCopy Suite  
Envelope Feeder Attachment-C1  
imageRUNNER Security Kit-A2  
Platen Cover Type H  
Puncher Unit-R1

\*Requires 3-way unit.  
\*UFR II not supported.

**Canon**  
image*ANYWARE*

1-800-OK-CANON  
www.usa.canon.com

Canon U.S.A., Inc.  
One Canon Plaza  
Lake Success, NY 11042

As an ENERGY STAR® Partner, Canon U.S.A., Inc. has determined that these products meet the ENERGY STAR guidelines for energy efficiency. ENERGY STAR and the ENERGY STAR mark are registered U.S. marks. Windows and Windows NT are registered trademarks of Microsoft Corporation in the United States and/or other countries. Macintosh is a registered trademark of Apple Computer, Inc. Solaris is a trademark of Sun Microsystems, Inc. in the United States and other countries. Novell and NetWare are registered trademarks of Novell, Inc. in the United States and other countries. IPX/SPX is a trademark of Novell, Inc. CANON and IMAGERUNNER are registered trademarks, and RAPID FUSING SYSTEM is a trademark of Canon Inc. in the United States and may also be registered trademarks or trademarks in other countries. IMAGEANYWARE is a trademark of Canon. All referenced product names and other marks are trademarks of their respective owners.

Specifications subject to change without notice.  
Machine shown with optional accessories/equipment.  
©2006 Canon U.S.A., Inc. All rights reserved.

